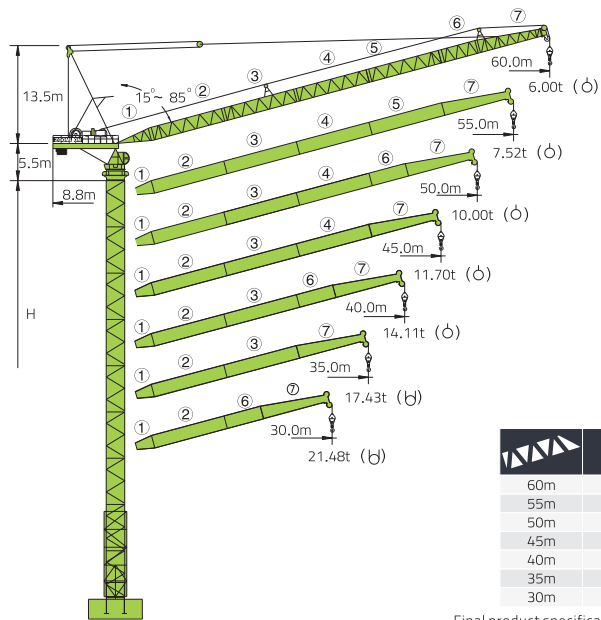


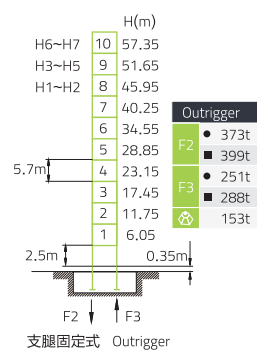
L500-32



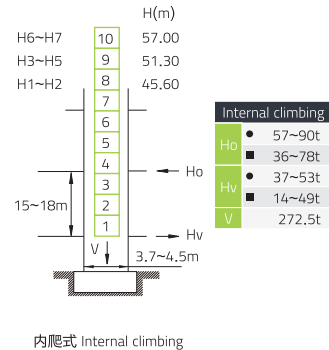
		H	(kg)	PHZ3000	PHZ6000	PHZ2250
60m	8.8m	H1	46500	3	2	2
55m	8.8m	H2	44250	3	2	1
50m	8.8m	H3	44250	3	2	1
45m	8.8m	H4	40500	3	1	2
40m	8.8m	H5	38250	3	1	1
35m	8.8m	H6	36500	2	2	2
30m	8.8m	H7	34500	3	0	2

Final product specification shall be in accordance with purchase order or sales contract only

塔身 Masts / 反力 Reactions



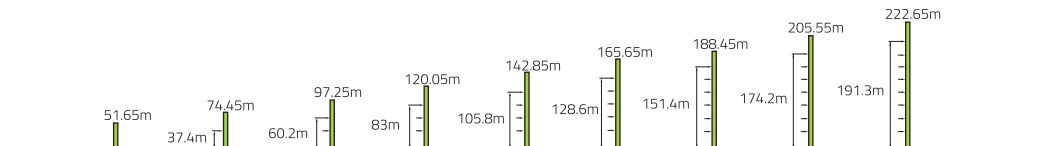
支腿固定式 Outrigger



内爬式 Internal climbing

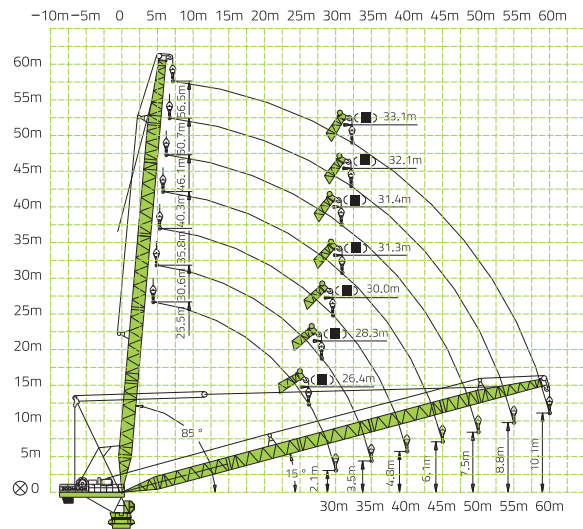
- 工作状态反力
Reactions in service
- 非工作状态反力
Reactions out of service
- ⊗ 独立高度、最大起重臂的自重 (不含平衡重、吊重)
Weight with max free-standing height, max jib
(without counter-weight and load)

附着 Anchorages



L500-32

起重臂 Luffing Jib








■ 非公况停放位置 Stop position out of service
 ⊗ 臂根铰点 Hinge point at jib root

起重特性 Load Diagram

Jib Height (m)	Luffing Angle (°)	Max Capacity (m/t)	Radius (m)																		
			18.0	20.0	23.0	25.0	28.0	30.0	33.0	35.0	38.0	40.0	43.0	45.0	48.0	50.0	53.0	55.0	58.0	60.0	
60	○	7.9~33.3/16.00				16.00					15.09	13.25	12.16	10.72	10.05	8.88	8.25	7.40	6.95	6.29	6.00
	⊗	7.6~27.3/20.00			20.00				17.98	15.93	14.60	12.88	11.91	10.50	9.64	8.62	8.00	7.12	6.65	6.07	5.85
55	○	7.4~34.6/16.00				16.00					15.76	13.90	12.92	11.43	10.62	9.53	8.81	7.99	7.52		
	⊗	7.1~24.2/24.00		24.00		23.68	20.73	19.00	16.90	15.48	13.62	12.51	11.06	10.24	9.21	8.52	7.71	7.38			
50	○	6.9~34.9/16.00				16.00					15.98	14.31	13.39	12.10	11.38	10.46	10.00				
	⊗	6.6~19.7/32.00	32.00	31.54	26.68	24.04	20.92	19.29	17.05	15.63	14.01	13.07	11.80	11.08	10.21	9.90					
45	○	6.4~35.9/16.00				16.00					14.89	13.81	12.41	11.70							
	⊗	6.1~20.0/32.00	32.00		27.21	24.61	21.36	19.72	17.56	16.33	14.58	13.53	12.20	11.63							
40	○	5.9~36.3/16.00				16.00					14.98	14.11									
	⊗	5.6~20.3/32.00	32.00		27.81	25.02	21.74	19.84	17.70	16.45	14.72	14.09									
35	○	5.4~35.0/16.00				16.00															
	⊗	5.1~20.5/32.00	32.00		28.29	25.54	22.28	20.50	18.25	17.43											
30	○	4.9~30.0/16.00				16.00															
	⊗	4.6~20.9/32.00	32.00		29.02	26.34	22.93	21.48													

L500-32

■ 起重特性 Load Diagram

配置 configuration			○			∩			KW	
			Ⅲ	Ⅳ	Ⅴ	Ⅲ	Ⅳ	Ⅴ		
 起升 Hoisting	QPL3290	m/min	0~36	0~72	0~90	0~18	0~36	0~45	110	620m Φ (6 layers)
		t	16	8	5	32	16	10		
 回转 Slewing	HPW55F1,130A×2 HPW55F2,130A×1	r/min	0~0.63						5.5×3	①超出咨 询我们 Consult us if overtop
 变幅 Luffing	BPL750A	min	3.8(15°~85°)						75	
	380V(±10%)50Hz	201.5kW								