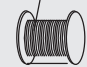

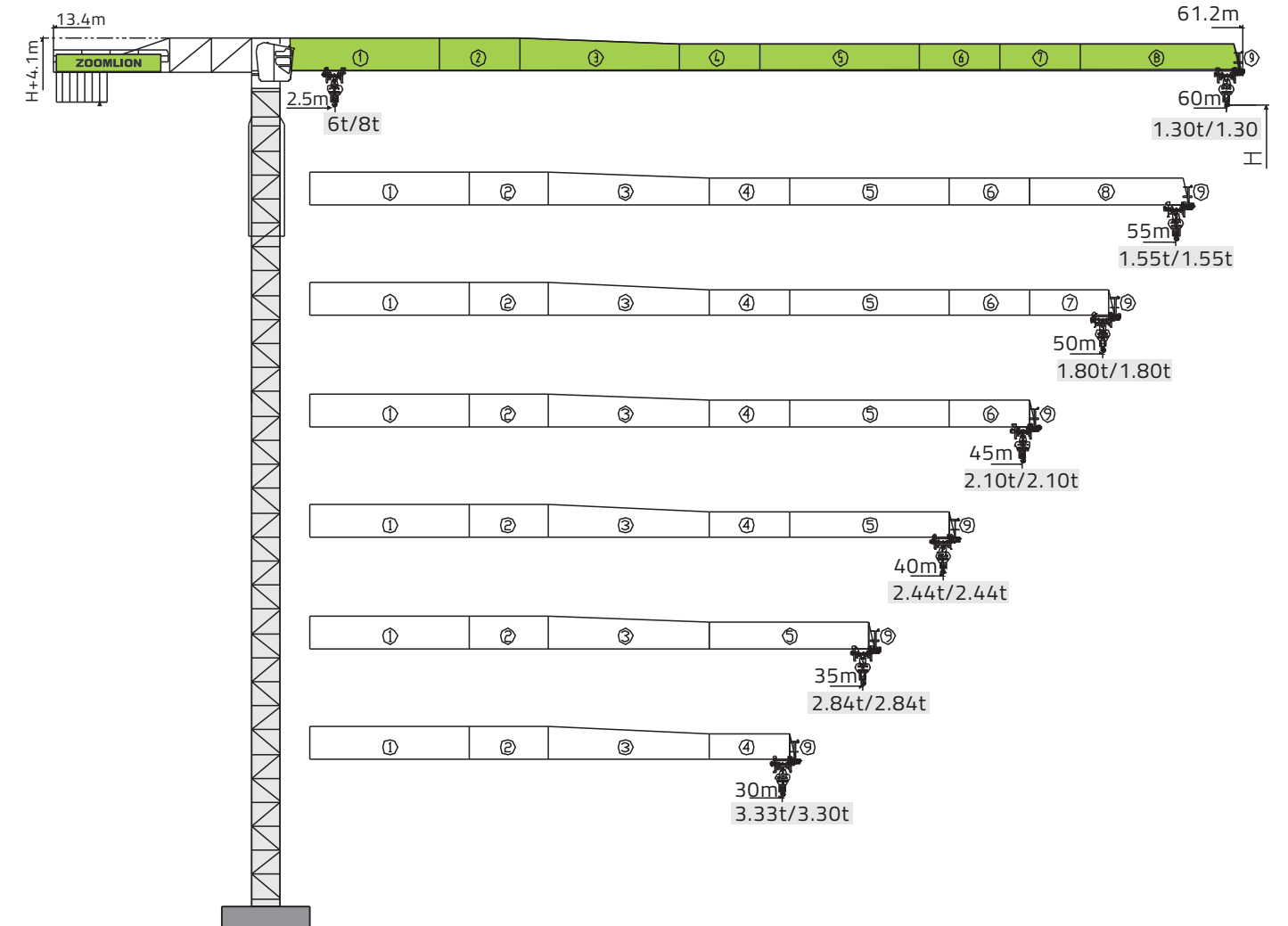





Mechanisms				bd		bd			kW
				IV	V	IV	V		
Hoisting	6t	H25FP15-380P	m/min	40	80	20	40	380m \varnothing (6 layers)	25
			t	3	1.5	6	3		
	8t	H30FP20-400P	m/min	40	80	20	40	400m \varnothing (6 layers)	30
			t	4	2	8	4		
Trolleying	6t	T30FC60	m/min	0-50					3
	8t	BP40B	m/min	0-55					4
Slewing	S40CR-100A10/12A		r/min	0-0.6					2x4.0
Travelling	2xZA52-D		m/min	0-25					2x5.2
	6t	380V($\pm 10\%$) 50Hz		36.0+2x5.2 kW					
	8t	380V($\pm 10\%$) 50Hz		42.0+2x5.2 kW					



T6013

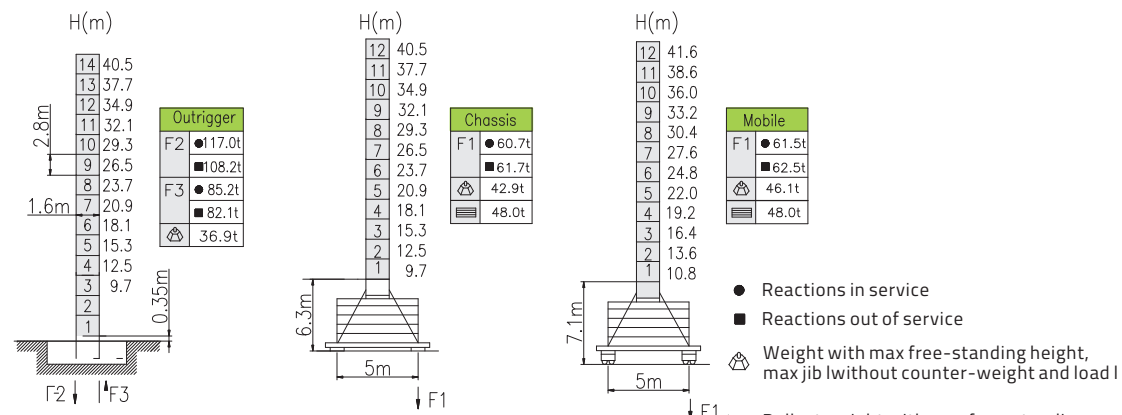
6t/8t



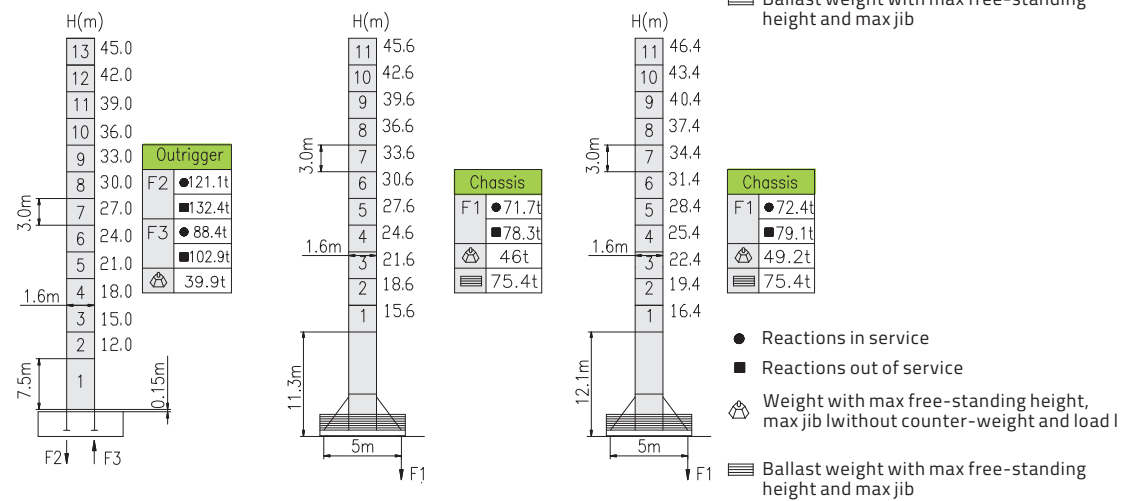
		 (Kg)	PHZ3500	PHZ2500
60m	13.4m	17500	5	0
55m	13.4m	16500	4	1
50m	13.4m	15500	3	2
45m	13.4m	14000	4	0
40m	13.4m	13000	3	1
35m	13.4m	10500	3	0
30m	13.4m	10500	3	0

Mast & reactions

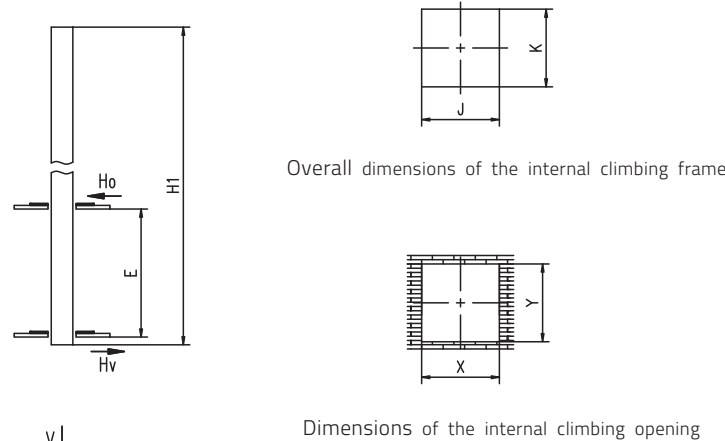
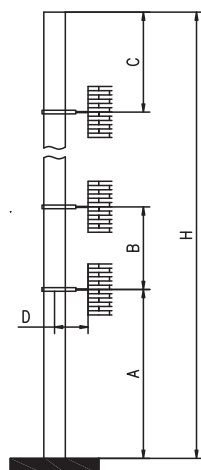
EQ7



L46A1



Anchorage & internal climbing



- Reactions in service
- Reactions out of service

Mast	Jib(m)	A (m)	B (m)	C (m)	D (m)	H (m)
EQ7	60	33	22.4	≤29.9	5.75	≤85
	60	33	22.4	≤27.1	5.75	85≤H≤183
	60	33	19.6	≤24.3	5.75	183≤H≤217
L46A1	60	33	24	≤33	5	≤186
	60	33	21	≤26	5	186≤H≤200

Mast	Jib(m)	H1 (m)	E (m)	V (t)	Ho(t)		Hv(t)		J (m)	k (m)	X (m)	Y (m)
					●	■	●	■				
EQ7	60	36.4	18-12	700	31.4	18.1	15.5	10.9	2.09	2.14	≥2.2	≥2.2
L46A1	60	39	7-11	77.52	53.42	18.03	28.46	12.56	2.9	2.4	≥3.0	≥2.5

Load diagram

6t

R(m)		Max capacity (m/t)	25.0	28.0	30.0	35.0	40.0	45.0	50.0	55.0	60.0
60	bd	2.5—33.6/3.00	3.00	3.00	3.00	2.85	2.38	2.02	1.73	1.50	1.30
	bb	2.5—19.0/6.00	4.29	3.72	3.40	2.77	2.31	1.95	1.66	1.42	1.23
55	bd	2.5—34.4/3.00	3.00	3.00	3.00	2.93	2.46	2.09	1.79	1.55	
	bb	2.5—19.4/6.00	4.41	3.83	3.50	2.86	2.38	2.01	1.72	1.48	
50	bd	2.5—34.5/3.00	3.00	3.00	3.00	2.95	2.47	2.10	1.80		
	bb	2.5—19.5/6.00	4.43	3.85	3.52	2.88	2.39	2.02	1.73		
45	bd	2.5—34.6/3.00	3.00	3.00	3.00	2.95	2.47	2.10			
	bb	2.5—19.5/6.00	4.44	3.85	3.53	2.88	2.40	2.03			
40	bd	2.5—34.3/3.00	3.00	3.00	3.00	2.92	2.44				
	bb	2.5—19.4/6.00	4.39	3.81	3.48	2.84	2.37				
35	bd	2.5—34.2/3.00	3.00	3.00	3.00	2.84					
	bb	2.5—19.0/6.00	4.28	3.71	3.39	2.77					
30	bd	2.5—30.0/3.00	3.00	3.00	3.00						
	bb	2.5—18.7/6.00	4.20	3.64	3.33						

8t

R(m)		Max capacity (m/t)	25.0	28.0	30.0	35.0	40.0	45.0	50.0	55.0	60.0
60	bd	2.5—26.8/4.00	4.00	3.79	3.48	2.85	2.38	2.02	1.73	1.50	1.30
	bb	2.5—14.9/8.00	4.29	3.72	3.40	2.77	2.31	1.95	1.66	1.42	1.23
55	bd	2.5—27.4/4.00	4.00	3.90	3.58	2.93	2.46	2.09	1.79	1.55	
	bb	2.5—15.2/8.00	4.41	3.83	3.50	2.86	2.38	2.01	1.72	1.48	
50	bd	2.5—27.5/4.00	4.00	3.92	3.59	2.95	2.47	2.10	1.80		
	bb	2.5—15.3/8.00	4.43	3.85	3.52	2.88	2.39	2.02	1.73		
45	bd	2.5—27.5/4.00	4.00	3.92	3.60	2.95	2.47	2.10			
	bb	2.5—15.3/8.00	4.44	3.85	3.53	2.88	2.40	2.03			
40	bd	2.5—27.3/4.00	4.00	3.88	3.56	2.92	2.44				
	bb	2.5—15.2/8.00	4.39	3.81	3.48	2.84	2.37				
35	bd	2.5—27.2/4.00	4.00	3.78	3.47	2.84					
	bb	2.5—14.9/8.00	4.28	3.71	3.39	2.77					
30	bd	2.5—26.1/4.00	4.00	3.60	3.30						
	bb	2.5—14.3/8.00	4.08	3.53	3.23						